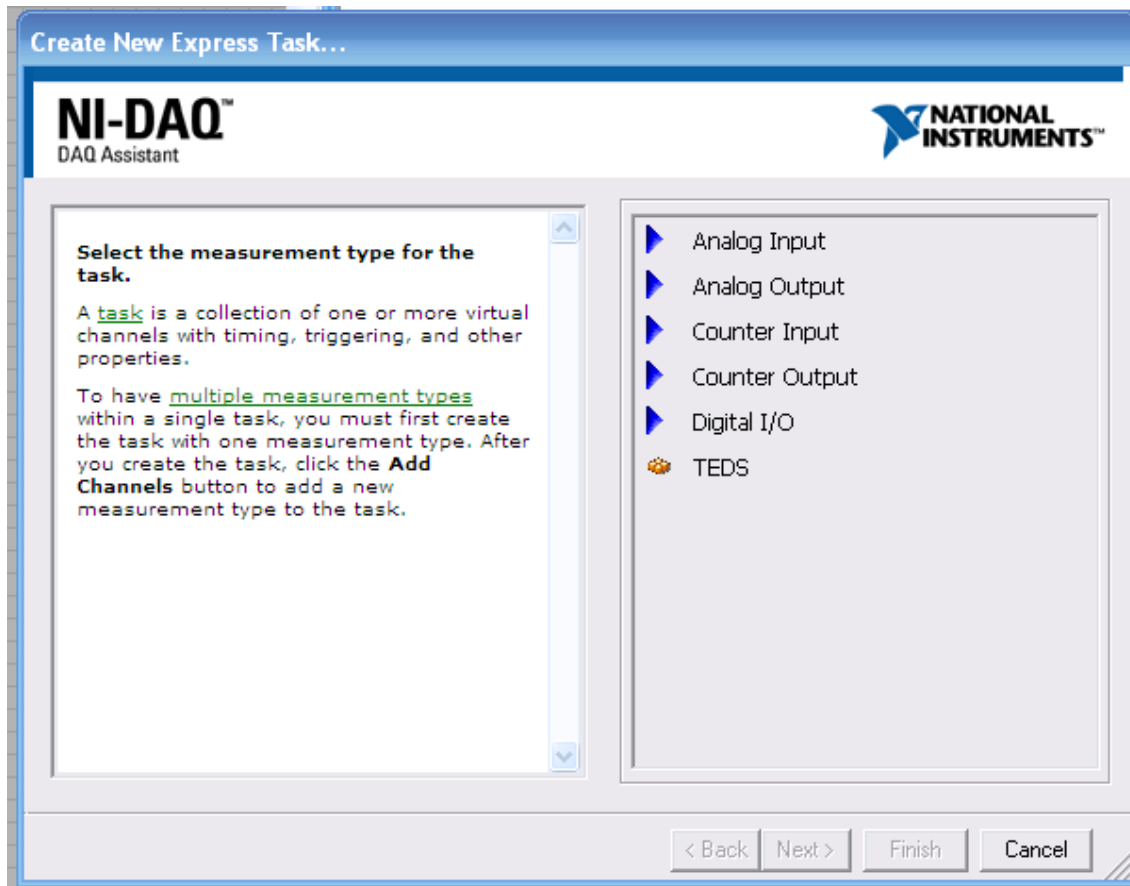
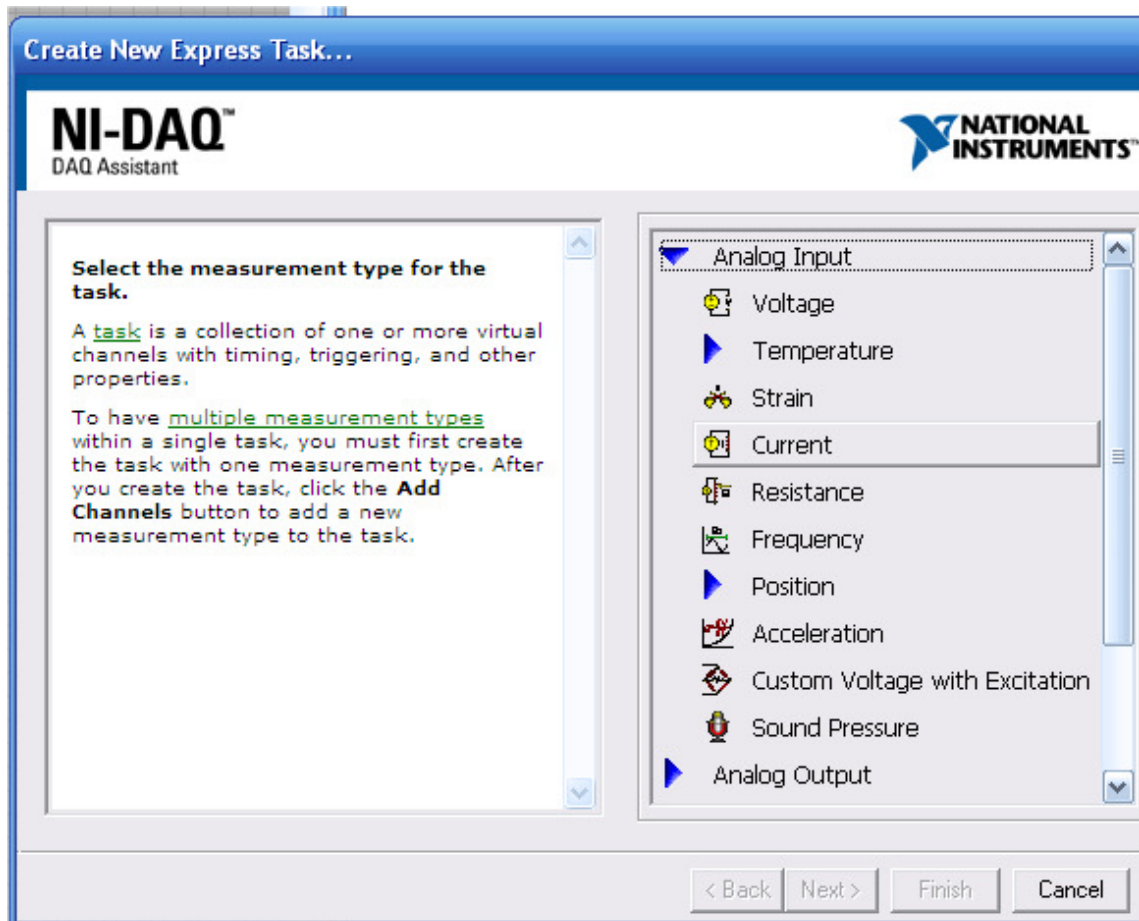


Criação de input de corrente com USB 6008

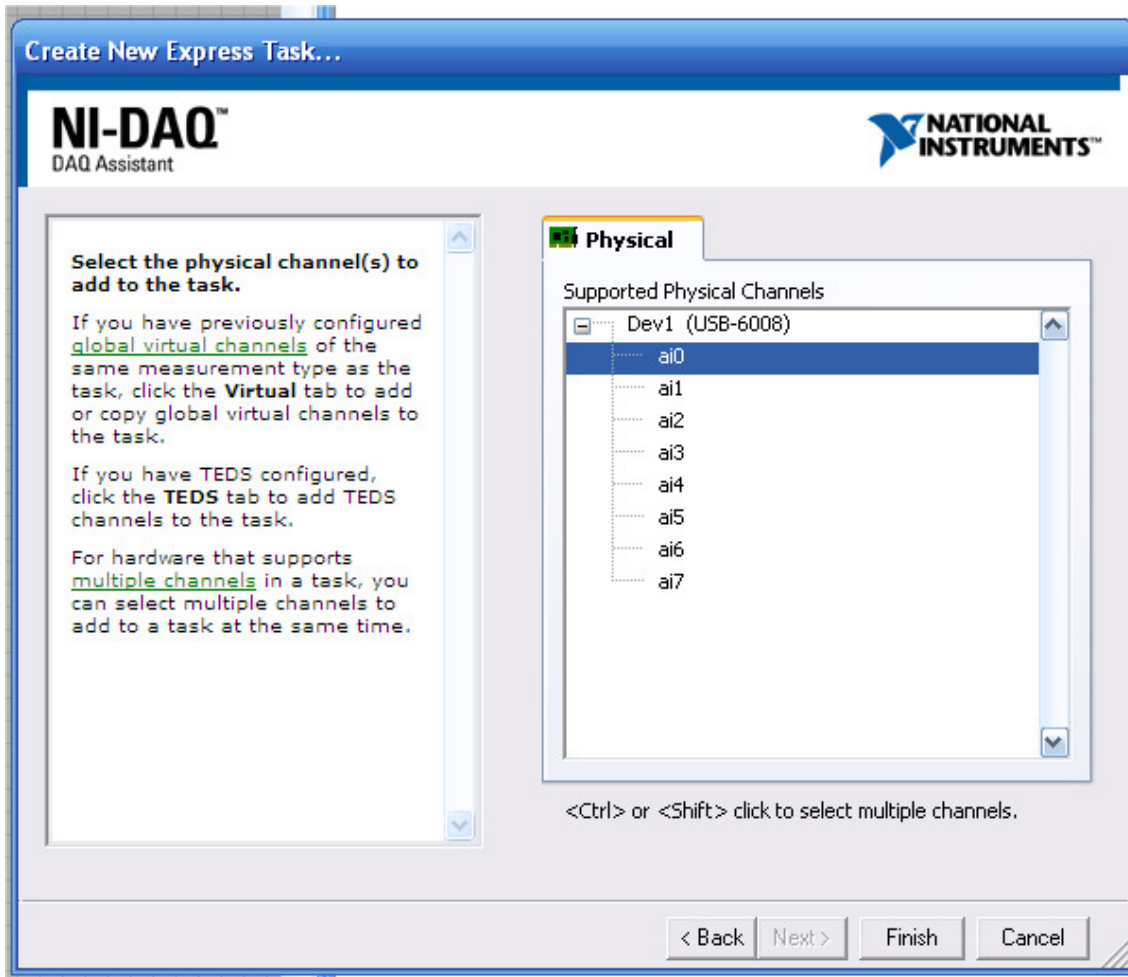
Escolha aqui Analog input:



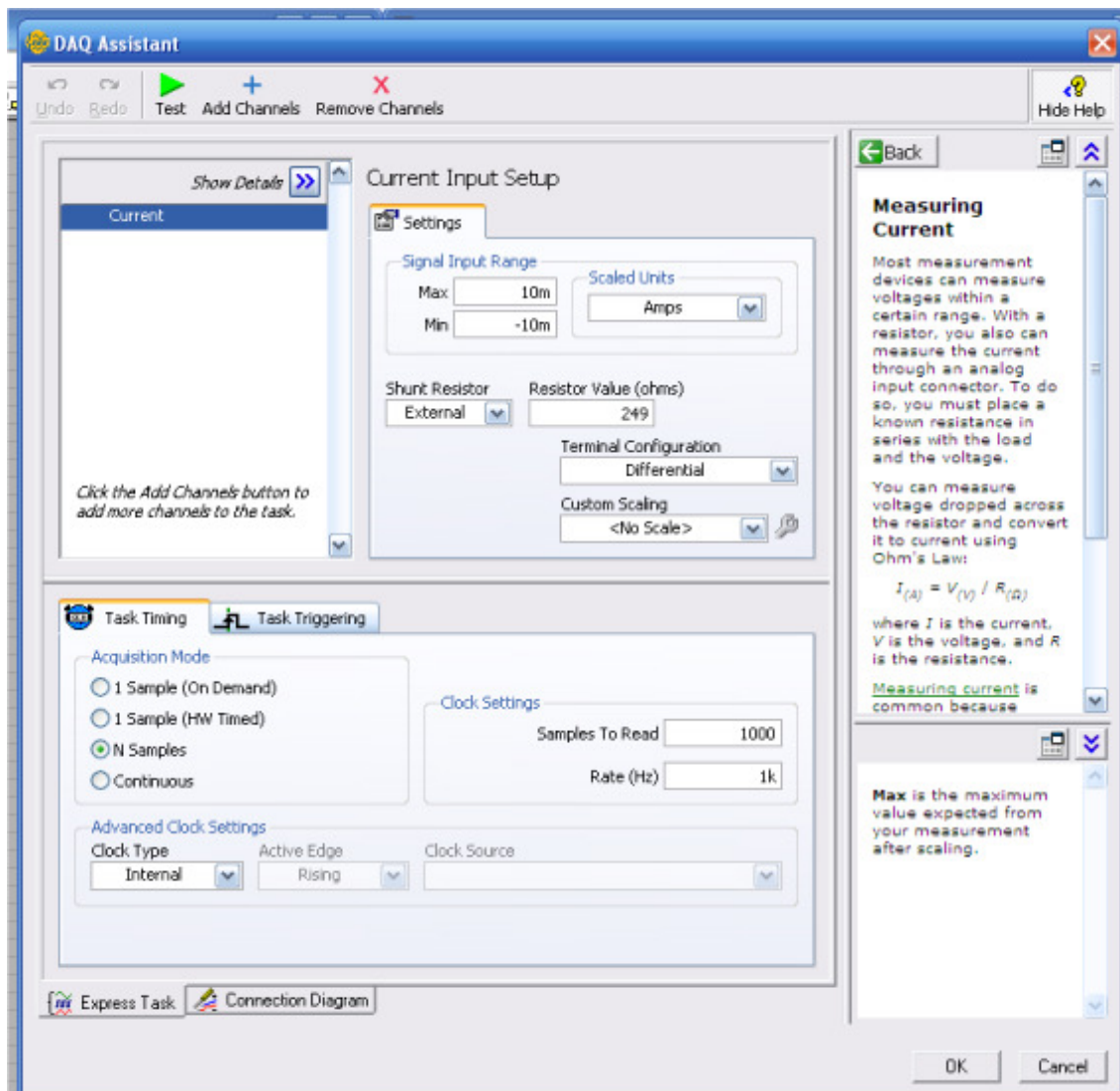
Depois Current:



Depois escolha p ex o canal zero, pinos 2 e 3



Defina aqui os seus parâmetros, e leia as instruções laterais:



Clique em connection Diagram, e verifique que a própria NI aconselha uma medida de corrente como tensão aos terminais duma resistência:

DAQ Assistant

Undo Redo

Hide Help

Channels in Task

Current

Connections List

Point 1	Point 2
Current Ext Res/CH+	16PinCombicon/2
Current Ext Res/CH-	16PinCombicon/3

Save to HTML...

NATIONAL INSTRUMENTS

Express Task Connection Diagram

Back

Use the Connection Diagram tool to view the required signal connections between your sensor and connector block. To use the tool, you must first specify an accessory for your device. Right-click your device under **Devices and Interfaces** and select **Properties** to specify an accessory. The tool currently supports analog input measurement types and most MIO and SCXI screw terminal blocks.

To save a connection diagram, click **Save as HTML** and enter a name for the HTML file. An **Images** subdirectory is created that contains all of the connection diagram images.

Use a web browser such

Connections List displays in tabular format the connections that need to be made from sensor to connector block.

OK Cancel